

# Granite® HDX

Optimum outdoor pre-painted product

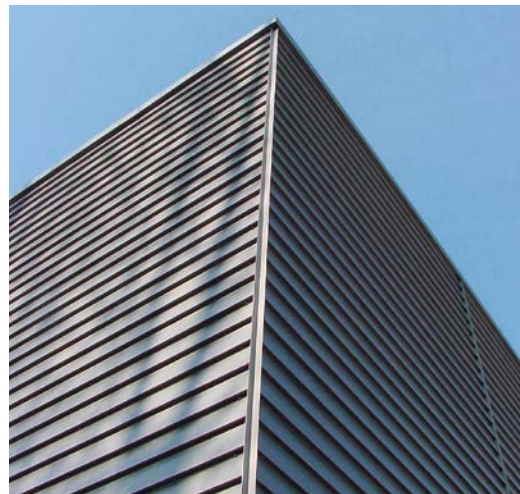
where outstanding resistance to corrosion and colour stability are required

Granite® HDX is the ideal choice to make buildings attractive using a top-quality product.

## Beyond your expectations

Technically and aesthetically, Granite® HDX is the best-in-class product from the ArcelorMittal Granite® range:

- Automatic guarantee of up to 30 years, depending on the external environment
- Seafront (300 m to 1 km): automatic guarantees are granted for a period of 15 years
- Aesthetic colour palette and metallic shades with outstanding colour and gloss retention
- Robust metallic substrate (Z275 or ZA255) for high corrosion resistance and cut-edge protection
- Grained product for surface hardness and excellent robustness for handling and processing



## Main properties

Nominal paint thickness	55 microns
Gloss (Gardner 60°)	30 GU
Clemen scratch resistance	≥ 3 kg
Surface "pencil" hardness	F to H
Adhesion of the coating (T-bend)	≤ 1 T
Resistance to cracking on bending (T-bend)	≤ 1.5 T
Corrosion resistance (salt spray test)	700 hours (ISO 7253) / RC5 category according to EN 10169 (the best)
Condensation resistance (QCT test)	1500 hours (ISO 6270)
UV resistance (QUV test)	2000 hours (ISO 4892-3) / RUV4 category according to EN 10169 (the best)
Fire classification	A1 in accordance with EN 13501-1

## Dimensional feasibility

	Thickness (mm)	Min width	Max width
Granite® HDX	0.20 ≤ th < 3.00	700	1850

## Applications

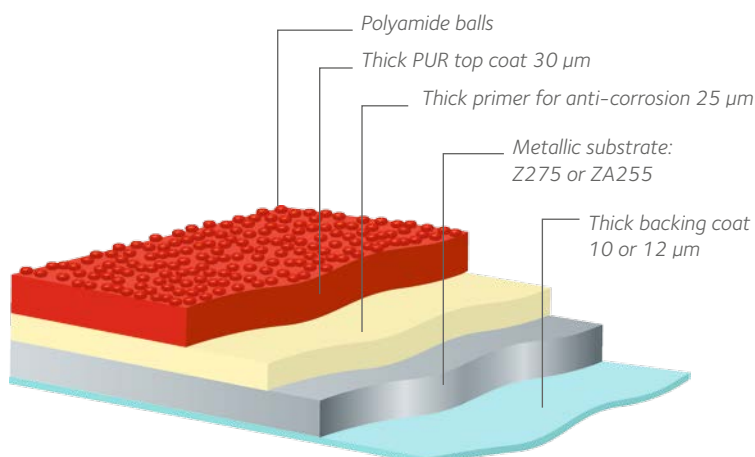
- External building applications: roofing and cladding

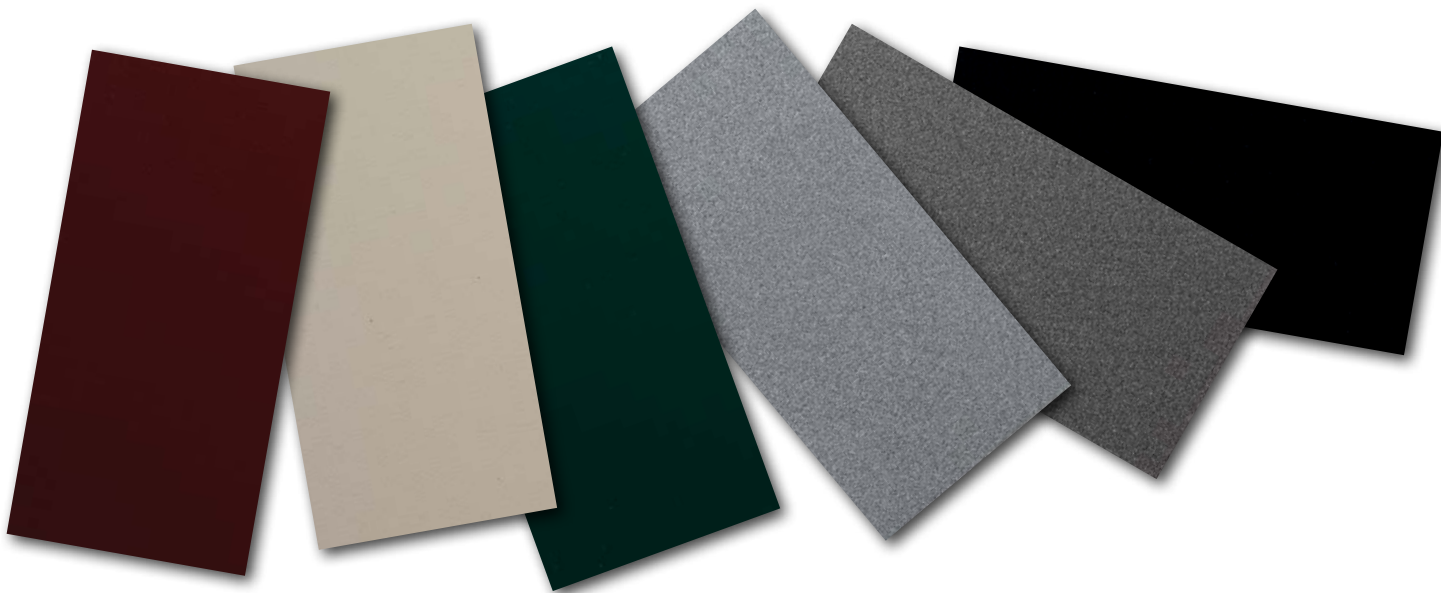
Granite® HDX is the answer to harsh and Northern climes and environments:

- Cold and wet environments
  - Coastal regions (less than 20 km from the sea)
  - Sunny regions with strong UV radiation
  - Industrial and polluted areas
- Other external applications, such as air conditioning, heating and ventilation casing

## Process

Granite® HDX can be processed by cold forming and deep drawing without damaging the top surface, and can be joined using techniques such as clinching, riveting and adhesive bonding.





ArcelorMittal has more than 15 years' production experience on different coil-coating lines in Western Europe. To ensure the best, most consistent quality of Granite® HDX, line products are regularly tested and subjected to outdoor exposure on a C5-M site (very close to the sea).

### A rich diversity of colours

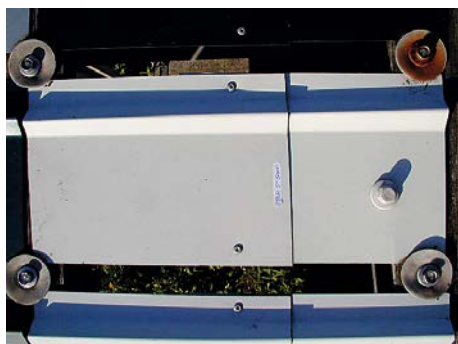
ArcelorMittal's Granite® HDX is available in a wide range of beautiful grained colours.

To discover the possibilities, please refer to our colour palette for the Granite® range.

### We are here to help you

For further information, detailed catalogues or technical data, please visit:  
[www.arcelormittal.com/industry](http://www.arcelormittal.com/industry)

Or contact us direct at:  
[fce.technical.assistance@arcelormittal.com](mailto:fce.technical.assistance@arcelormittal.com)



Granite® HDX G3009 (close-up)



Granite® HDX G6300 (close-up)

Example to illustrate the excellent behaviour of the product: 5 years of exposure at the external exposure site at Hendaye (south-west France)

### Credits

Pictures from SCH Holland b.v. and Philippe Vandenameele

### Copyright

All rights reserved. No part of this publication may be reproduced in any form or by any means whatsoever, without prior written permission from ArcelorMittal.

Care has been taken to ensure that the information in this publication is accurate, but this information is not contractual. Therefore ArcelorMittal and any other ArcelorMittal Group company do not accept any liability for errors or omissions or any information that is found to be misleading.

As this document may be subject to change at any time, please consult the latest information in the product document centre at [www.arcelormittal.com/industry](http://www.arcelormittal.com/industry)



### Flat Carbon Europe

19, avenue de la Liberté  
 L-2930 Luxembourg  
[fce.technical.assistance@arcelormittal.com](mailto:fce.technical.assistance@arcelormittal.com)  
[www.arcelormittal.com/industry](http://www.arcelormittal.com/industry)